

Realize Language Quick Reference Guide for PRC Accent devices with NuVoice



The Realize Language (RL) Service

The Realize Language service is a web-based product that helps you see how a client is using a PRC communication device. Data is collected on the device, which can then be uploaded to the Realize Language site and analyzed. Realize Language converts data into a number of easy-to-use reports that make understanding how someone is using words much easier.

STEP 1: CREATE A PRC ACCOUNT

To set up a Realize Language account, you must create a free *Everything PRC!* account. The email and password you use for your *Everything PRC!* account will be the same that you use to access the Realize Language website. If you already have one of these, then you can skip this section.

1. Go to <https://account.prentrom.com> and select **Create Account**.
2. Enter your details into the various boxes on the **Create Account** page. The email and password that you use are also the ones you will use for your Realize Language account.
3. You have now created your *Everything PRC!* account and can use the email/password for your Realize account.

STEP 2: ACTIVATE YOUR RL ACCOUNT

Your Accent device includes a FREE one-year subscription to the Realize Language website. Your subscription is activated using a special CODE that is on a postcard in the shipping box. If you purchase a subscription online, the code is sent to you in an email.

1. Log in to your *Everything PRC!* account using <https://account.prentrom.com>
2. On the **Account Overview** page, in the right-hand corner, you will see “Have an Activation Code?” with a box into which you can **enter your activation code**.
3. Select **Check Code** and you should see a screen that confirms your Realize Language account. If you get a “code not valid” message, check your code and try again.
4. Your Realize Language account is now active.

STEP 3: LOG INTO YOUR RL ACCOUNT

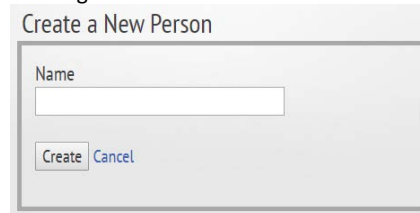
1. Go to <https://realizelanguage.com>
2. Click on the **Login link** at the top right of the screen.



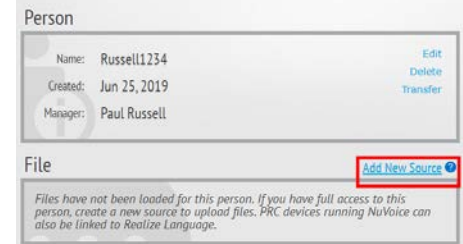
3. Enter your *Everything PRC!* email and password, then select **Login**.
4. The first time you log into your Realize account you will be on a page called **Manage People** and will be asked to **Create a New Person**.

STEP 4: CREATE A NEW PERSON IN YOUR RL ACCOUNT

1. In the box headed Name, enter a name or identifier for the person whose data you will be tracking.



2. On the new page that opens, click on the link **Add New Source**. You must now provide a name for the device on which data is being tracked.
Russell1234 » Summary



3. Use the Name box to give the device a name and, if you want, add any other comments in the Description box. You don't have to include a description, but you must have a name.
4. Select the **Dashboard** tab on the top and you will go to a page called **Overview** for the person you are tracking.
5. You have now set up a Person in your account and are ready to upload data from your device.

STEP 5: CONNECT YOUR ACCENT DEVICE TO WI-FI™

When a new device is shipped, the data logging feature is turned OFF by default. You must turn data logging ON.

1. Select the **Tools** key at the top right.



2. Select **TOOLBOX** button on the left.



3. Select the **MAINT MENU** key.
4. Select **Hardware Diagnostics**.
5. Select **Network Setup**.
6. You should now see the desktop of the computer. Swipe from the right.
7. Select **Network**.
8. Connect to the Wi-Fi network you want.

STEP 6: CONNECT YOUR DEVICE TO YOUR RL ACCOUNT.

Once your device is connected to Realize Language, data will be automatically copied from the device to the website every 24 hours. If there is no Wi-Fi service available, the device simply waits until there is and uploads all new data since the last upload.

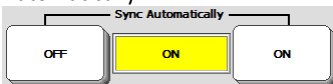
1. Select **Tools** and then **TOOLBOX**.
2. Select **REVIEW VOCAB MENU**.
3. Select **Data Logging and Realize**.
4. In the middle of the page, note that there is a box called **Current Status**:



5. Select **Realize Language Account**.
6. Enter your Realize Language account email address and select **OK**.
7. Enter your password and then **OK**.
8. A page opens that will show the name of your Person in a button. If you have set up more than one Person you will also see those names.
9. Select the Person and note that the **Current Status** will change to show that the device is connected, the email address, and the device name.



10. To sync data automatically, turn **ON** Sync Automatically.



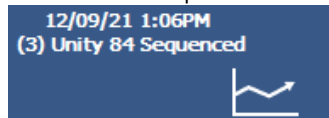
11. Finally, if you want to send data now (or at any time) you can select **Sync Realize Language Now**.
12. Click in **OK** three times until you return to your home screen. Your device is now connected.

Your file is now saved to your USB flash drive and now you can go to your Realize Account to upload it.

STEP 7: TURN DATA LOGGING ON.

When a new device is shipped, the data logging feature is turned OFF by default. You must turn data logging ON for it to work with the Realize Language site.

1. Select **Tools** and then **TOOLBOX**.
2. Select **REVIEW VOCAB MENU**.
3. Select **ON** under **Data Logging**.
4. In the **Status Display** you will see either the letters "ADL" or a picture of a small graph.



5. Select **OK** twice to go back to your home screen.

Your device will now log what is sent to the Text Area and when it was said. It will also send that data automatically to the Realize Language website every 24 hours if you've chosen to use Auto-Uploading.

IF YOU DON'T HAVE ACCESS TO WI-FI, YOU CAN DOWNLOAD A DATA LOG FILE FROM YOUR DEVICE ONTO A USB FLASH DRIVE AND THEN UPLOAD IT TO THE REALIZE LANGUAGE WEBSITE.

1. Plug in a USB flash drive.
2. Select **Tools** and then **TOOLBOX**.
3. Select **REVIEW VOCAB MENU**.
4. Select **Data Logging and Realize**.
5. Select **Save Data Log to File**.
6. If the pre-set folder is set to the flash drive, choose **OK**; if not, select **Choose different folder** and navigate to your flash drive. Give it a name and select **OK** five times.
7. Unplug the flash drive and plug it into your computer.
8. Go to <https://realizelanguage.com> and login.
9. Go to your **Dashboard** page and select the **Manage** tab.
10. Select **File** on the top right.
11. Choose **Select a file to Upload**.
12. Using the window that pops up, find the file you just saved and select it.

13. Click **Open** and your file name will appear on that button.
14. Click **Upload**.

Your file is now uploaded and you can go back to your Dashboard to start looking at the new data.